

Quick Guide



DEEPFLY VX



www.deepfly.kr

Safety and Precaution

Product use and precautions

- Do not disassemble the product or subject the product to impact. Doing so may damage the product. Unauthorized disassembly of the product voids the product warranty.
- Do not operate the product while driving a vehicle. Distraction while driving may cause accidents and result in injury or death.
- Do not expose the product to direct sunlight or intense light. The lens or internal circuitry may fail permanent physical damages may result if it is operated or stored out of the specified temperature ranges. Such damages are not covered by the warranty.
- Do not remove SD card or turn off the power cable during the firmware update. It may cause malfunction or loss of data.
- Use of genuine DEEPLY memory card is recommended. Failure to use genuine SD card may cause error or malfunction.
- Real-time recording and playback via Wi-Fi could be delayed depending on the specifications of your smart device.
- Motion detection is initiated by an image sensor software. Errors may occur depending on the surrounding environment and the voltage of the car.
- If the GPS signal is good, ADAS will activate when the speed of the car is above the set speed. The surrounding environment may cause errors.
- Do not modify or cut the power cable. Also, do not place heavy objects on the power cable or pull, insert, or bend the power cable not using excessive force. Doing so may result in electrical fire or electrocution.
- Unauthorized connection of the power cable may cause malfunctions. Connections must be different depending on the power type of the vehicle. (Please contact a professional engineer if you need help to install it)

Product Specifications

Specifications - VX Main

Model name	Deepfly VX
Recording method	Continuous (always-on, hyperlapse), impact, manual, parking (motion, time-lapse) recording
Main function	2 second quick boot , night vision, format free 2.0, low voltage cutoff, high temperature cutoff
Main built-in I/F	Built-in GPS , 3-axis acceleration sensor, microphone, speaker
Application	Mobile app (USB type C cable connection, Wi-Fi wireless connection)
Memory card	Micro SD card (32GB~512GB)
LED indicator light	White: Power, Red: Manual/Shock Recording, Blue: GPS
Input power	DC12~24V
Current consumption	1CH (200mA), 2CH (300mA)
Operating Temperature/ Storage Temperature	-10°C ~ 60°C / -20°C~70°C
Dimensions	82(W) * 54(H) * 14(D)mm

Product Specifications - Camera

Camera / Angle of view	2M Pixel SONY STARVIS 1/2.8" / 142°
Resolution / Frame rate	1920*1080p FullHD / 30fps
Dimensions	51(W) * 30(H) * 44(D)mm

Product Components

VX Series - 1CH



VX Main + Camera

VX Series - 2CH



VX Main + Camera + Camera

VX Series - Extensions Camera



Interior Infrared Camera



External Waterproof Camera



Car Pedal Camera

VX Series - Common Components



Camera connection cable (Select : 1m / 3m / 6m)



Hardwiring Cable



Micro SD Card



Quick Guide



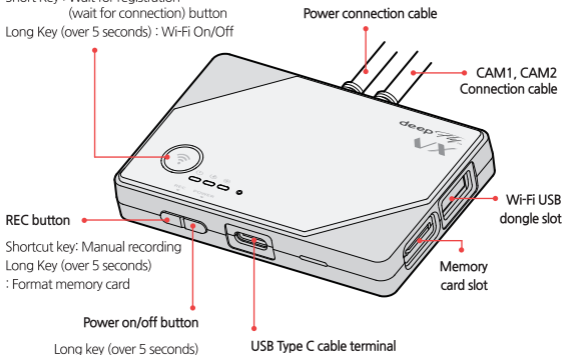
Wi-Fi USB Dongle

Names of Each Part of the Product

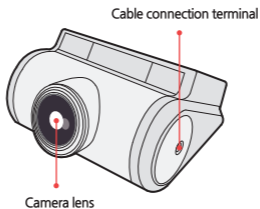
VX Body

Wi-Fi connection button

Short Key : Wait for registration
(wait for connection) button
Long Key (over 5 seconds) : Wi-Fi On/Off



Connect front/rear camera



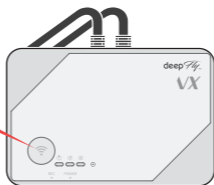
Using the Wi-Fi Connect



Download the **Deepfly Connected** app from Play Store and App Store.



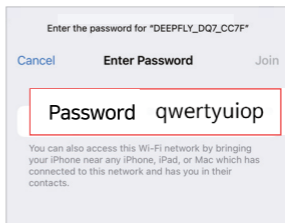
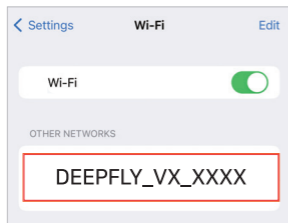
Step1. Activate WiFi function



- 1 When you press the 'Wi-Fi registration/connection' button on the black box body, the Wi-Fi function is activated.

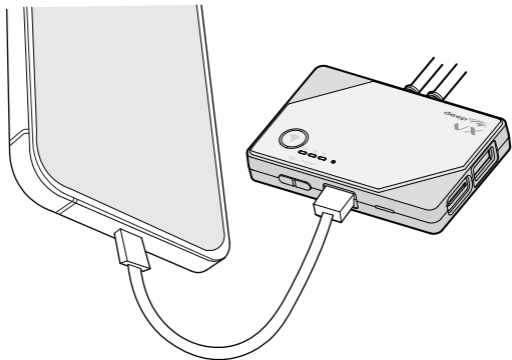
Step2. Smartphone connection

In the smartphone Wi-Fi settings menu, select the SSID starting with **DEEPFLY_VX_XXXX**, enter the password, and connect to the device. (Password: **qwertyuiop**)



Using the Cable Connect

Step1. Connect the cable



- 1 After connecting the smartphone cable, connect the cable to the 'USB Type C' terminal at the bottom of the VX body.

Please connect the cable that matches your smartphone model. (Cable is sold separately.)
For iOS, please use a genuine cable.

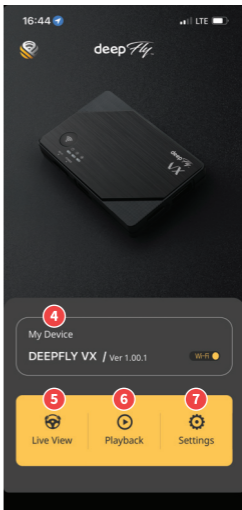
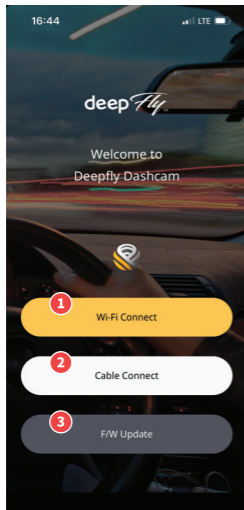
Step2. Smartphone connection

- 1 Install and run the Deepfly Connected app.
After clicking the 'Cable Connection' button on the app's main screen, follow the instructions on the 'Connection Information' screen and proceed with settings according to the 'Security Policy' to connect to the black box.

Using the Deepfly Connected App

Using the App

! It may change depending on the updated version, including feature improvements.



CONNECT

- 1 Wi-Fi wireless connection
- 2 USB Type C cable connection
- 3 Firmware update

HOME SCREEN

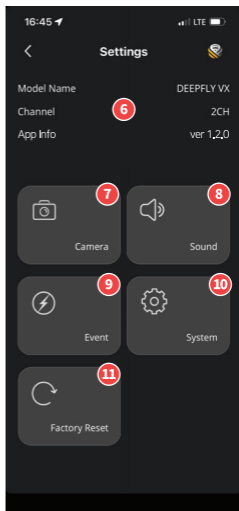
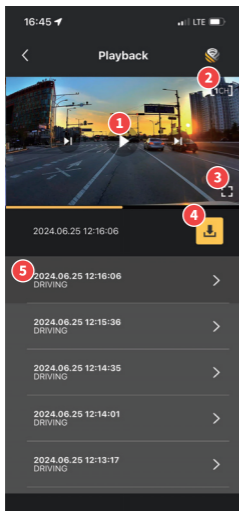
- 4 Connected product information
- 5 Live-View video button
- 6 Play record video
- 7 Setting

! For the VX model, real-time video is disabled when the cable is connected (recording stops when the cable is connected).

Using the Deepfly Connected App

Using the App

! It may change depending on the updated version, including feature improvements.



RECORD VIDEO

- 1 Play video and play button
- 2 Front and rear video switching
- 3 Full screen
- 4 Save video download
- 5 Recorded video list

SETTING

- 6 Information
- 7 Camera settings
- 8 Sound settings
- 9 ADAS settings
- 10 Event settings
- 11 System settings

Using the PC Viewer (Windows)

PC Viewer main screen

! The PC viewer can be downloaded from the Deep Fly website (www.deepfly.co.kr).



1 Play Cam 1 and Cam 2 videos

2 Screen transition button

3 Black box settings /
Video download button

4 Playbar and Play Button

5 Driving speed / Information /
Shock G sensor information

6 Video settings

7 Recording list

Deeply PC Viewer Recommended Specifications : Windows 10 or higher (64-bit recommended)

Using the PC Viewer (Mac)

MAC viewer main screen



1	Front/rear video playback screen	5	Save the current video
2	Black box settings / Screen switching / Full screen	6	Speed indicator
3	Map	7	G-sensor information
4	Video Controller	8	Recording file list

Deeply PC Viewer Recommended Specifications: MAC OS 10 or higher



Provides safety and convenience for people by technology

Model : VX

Product : DEEPFLY DASH CAM

Verification Number : R-R-Dpy-DEEPFLYDX7

DEEPFLY Co., Ltd

www.deepfly.kr

Made in Korea

